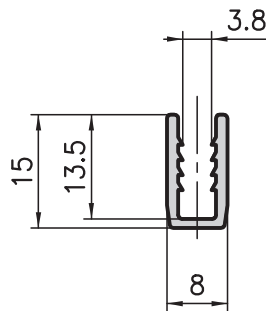


8x13.5 U-clamping extrusion type B19-6

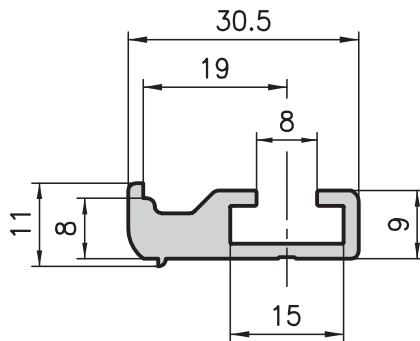


Application

A special extrusion for clamping the wire mesh. The U-extrusion fits into all extrusions with a base of 50, 45, 40 and 30 mm.

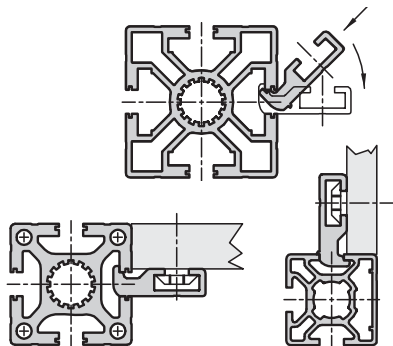
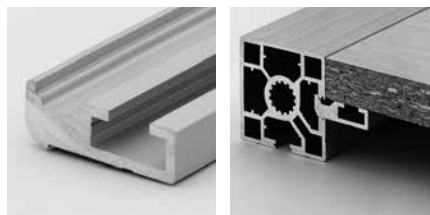


11x30.5 support extrusion type B19-7

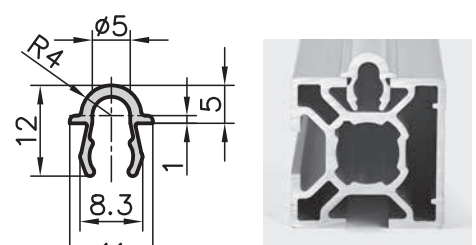


Application

The support extrusion is twisted into the 8 mm slots on the standard design extrusions and is used to support table tops, shelves, panels, etc.



Aluminium guide extrusion type B19-8



Application

This aluminium guide can be easily clipped into all slots of Base 50/45/40/30. With 30 base extrusions, a snap-in function prevents the guide from falling out. With 50/40 base extrusions, the guide is jammed in the slot. If necessary, a steel pin Ø 6 can also be pressed in on the side which prevents any possible movement of the guide. Advantages of this guide are:

- Quick and easy fitting, and inexpensive
- Closed slots reduce the build up of dirt
- Can be retrofitted at any time onto existing structures

Sliding doors are so easy and inexpensive to produce. Used especially in applications where the build up of dirt in an open slot or guide is to be prevented.

This extrusion is primarily used as a running rail for the concave roller.

Wheeled runner, see Page 151

Technical data

Cross-section area	=	0.53 cm ²
Weight	=	0.14 kg/m

Order data **Order number**

8x13.5 U-clamping extrusion	
Standard length 5000 mm	B19-6-00/5000
8x13.5 U-clamping extrusion	
Cut to length	B19-6-02-02/...

Technical data

Cross-section area	=	1.62 cm ²
Weight	=	0.44 kg/m

Order data **Order number**

11x30.5 stop extrusion	
Standard length 5000 mm	B19-7-00/5000
11x30.5 stop extrusion	
Cut to length	B19-7-02-02/...

Order data **Order number**

Aluminium guide extrusion	
Standard length 5000 mm	B19-8-00/5000
Cut to length	B19-8-02-02/...