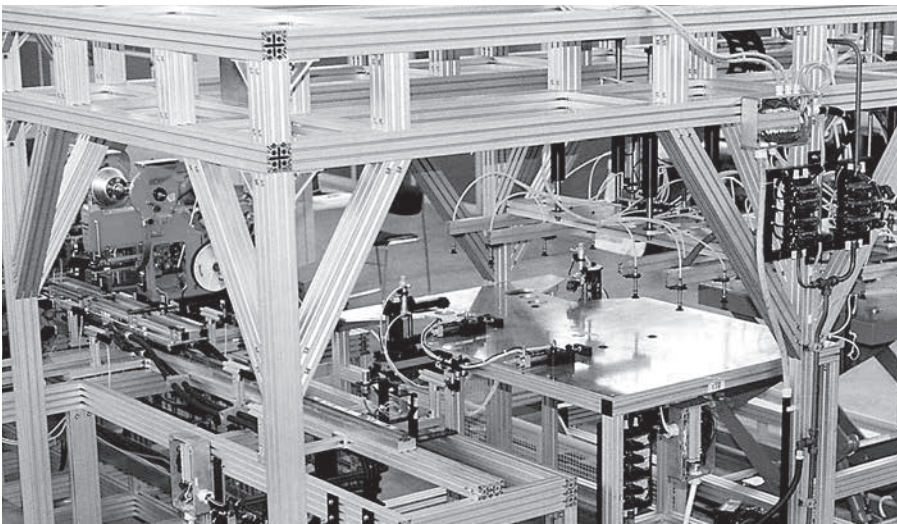
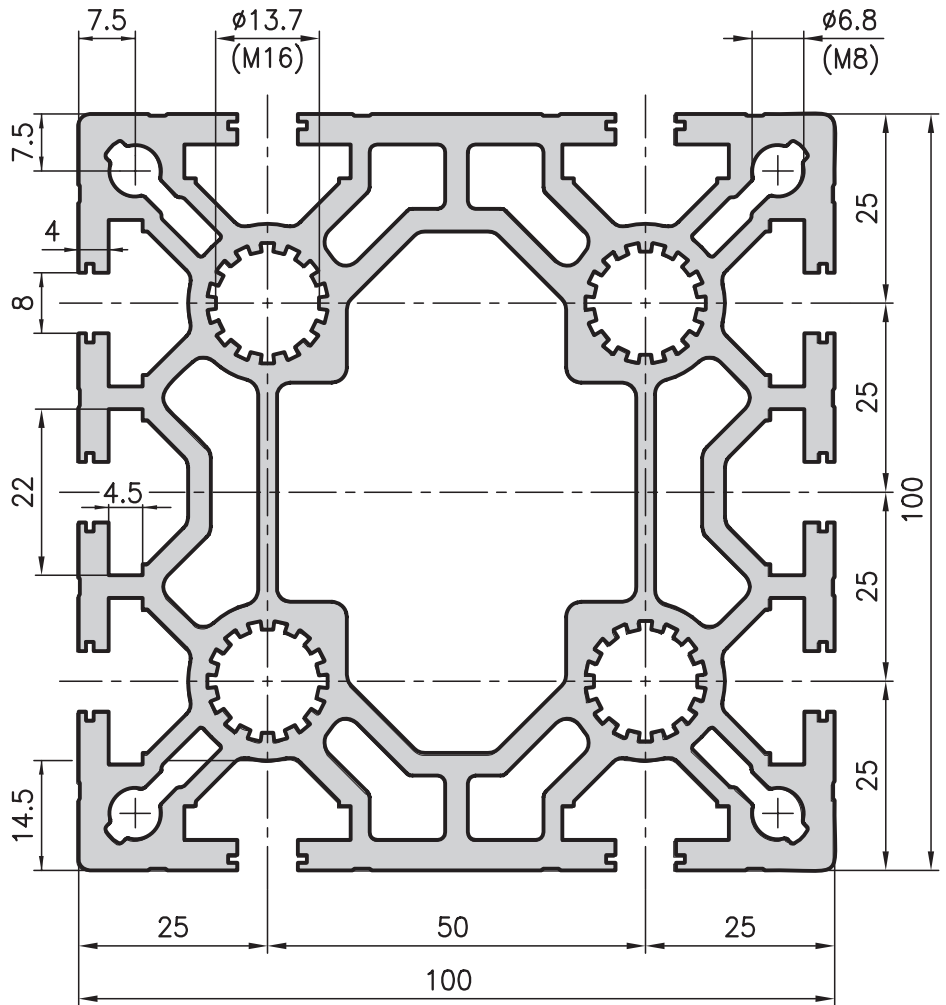
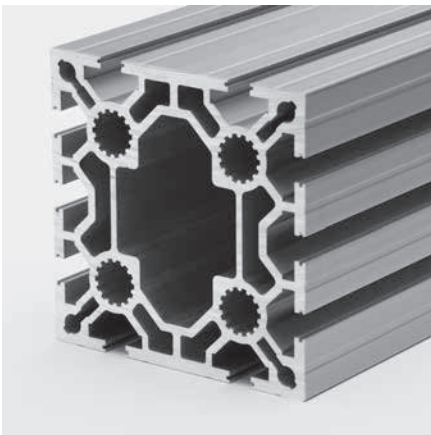


# 100x100 heavy duty extrusion type MA1-5

### Application

An extremely sturdy extrusion which is used as a support, stand or manifold. Ideal for building gantries if used in combination with the 100x200 heavy duty extrusion, MA1-9.



### Technical data

$I_x$	=	380.00 cm <sup>4</sup>
$I_y$	=	365.00 cm <sup>4</sup>
$W_x$	=	76.00 cm <sup>3</sup>
$W_y$	=	73.00 cm <sup>3</sup>
Cross-section area	=	35.19 cm <sup>2</sup>
Weight	=	9.5 kg/m

### Order data      Order number

100x100 heavy duty extrusion	
Standard length 5000 mm	MA1-5-00/5000
Standard length 6000 mm	MA1-5-01/6000
100x100 heavy duty extrusion	
Cut to length	MA1-5-02-02/...
Extra machining	Pages 57-61