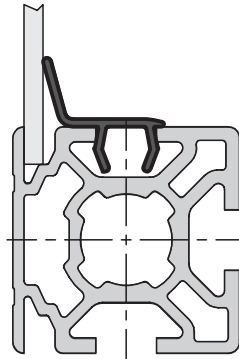
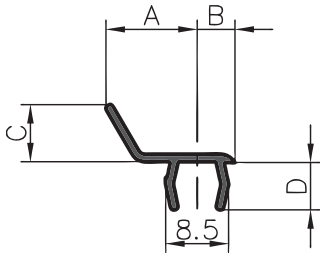


Supporting extrusion



Application

The supporting extrusion has two functions:

1. It gives optimum support (pressure) to thin panels which are inserted into the narrow slots.
2. At the same time it also covers the extrusion connector slots.

Specification

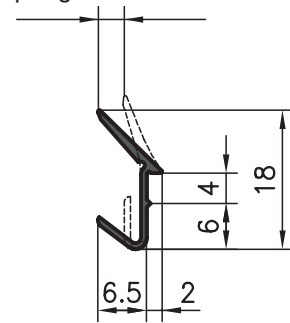
Suitable for panel thickness of 2–4 mm
Grey PVC

Measurement data

Extrusion base	A	B	C	D
30	13	5	8	6
40	15	7	10	9

Wedge extrusion

Spring deflection 3.5

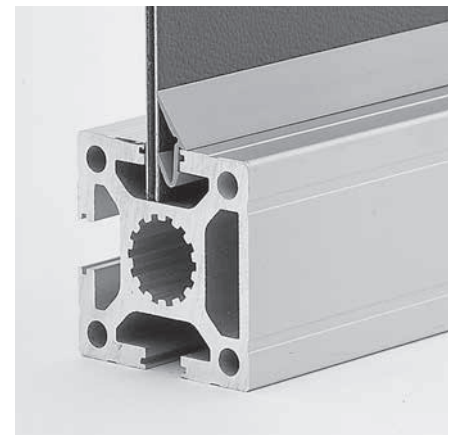
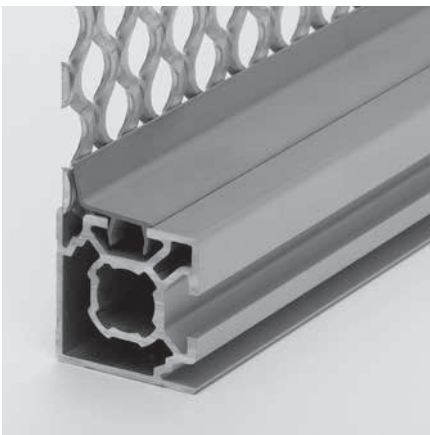


Application

The wedge extrusion can be pressed into the slot on extrusions with a base of 40, 45 and 50 mm. The force holds the panels tightly in place, however thick they are.

Specification

Grey PVC



Order data Order number

Clamping extrusion 30
Standard length 5000 mm B39-25-00/5000
Cut to length B39-25-02-02/...

Order data Order number

Supporting extrusion 40
Standard length 5000 mm C39-25-00/5000
Cut to length C39-25-02-02/...

Order data Order number

Wedge extrusion
Standard length 5000 mm C39-45-00/5000
Cut to length C39-45-02-02/...