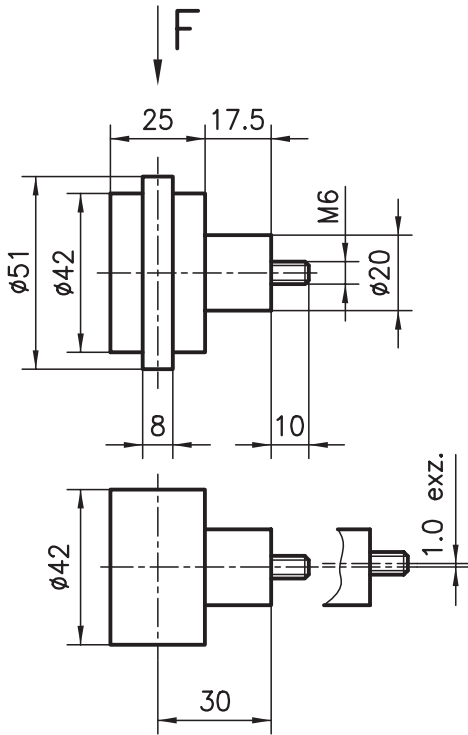


Rollers



Application

This roller is suitable for heavy sliding doors, as a wheel for workpiece holders or for general structures which have to move freely.

Insert the guide flange into the extrusion slot. Fit the flat roller onto the other side. This creates the perfect trolley/rail combination independent of the extrusion tolerance.

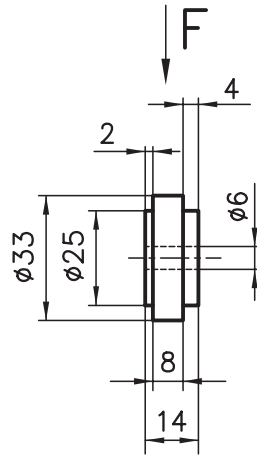
Specification

Plastic roller, ball bearing mounted, steel spacer, gunmetal finish
Radial load
F = 500 N



Order data	Order number	
------------	--------------	--

Roller with guide flange	Centric C48-00	Eccentric C48-01
Roller without guide flange	C48-10	C48-11

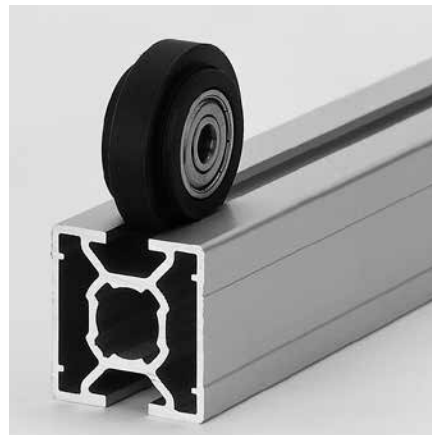


Application

This ball bearing-mounted roller is mainly used in an assembly with the trolley extrusion, although it can also be attached directly to any extrusion.

Specification

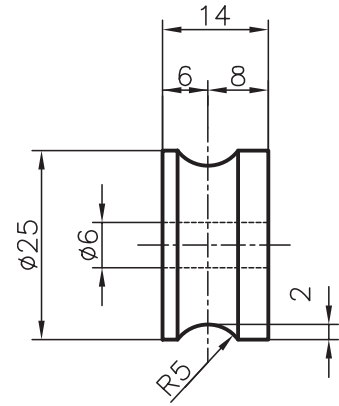
PA 6 black
2 deep groove ball bearings with cover disks
F = 150 N



Order data	Order number
------------	--------------

Roller PA	B48-05
-----------	--------

Concave roller



Application

This ball bearing-mounted roller is mainly used in an assembly with the trolley extrusion. It can however also be attached directly to any extrusion. The corresponding aluminium guide extrusion type B19-8 is used to produce an inexpensive roller guide in next to no time.

Specification

Plastic PA 6 black
2 deep groove ball bearings with cover disks
F = 150 N

Order data	Order number
------------	--------------

Roller, concave	B48-10
-----------------	--------