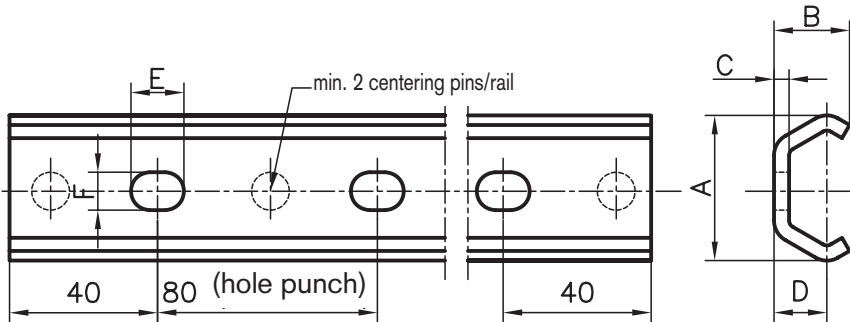


C-guide rails



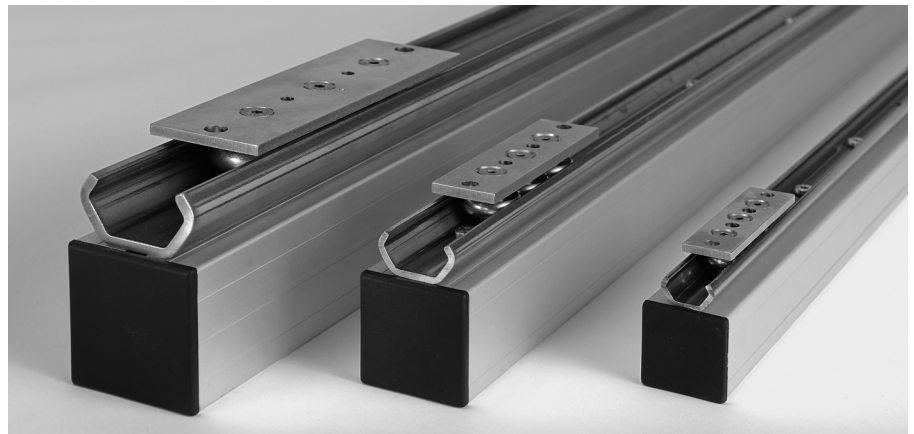
Measurement data

Size	A	B	C	D	E	F	kg/m
20	19.2	10	2	7	7	5	0.47
30	29.5	15	2.5	10	8.4	6.4	0.9
45	46.4	24	4	15.5	11	9	2.3

Application

The guide rail can be subjected to high loads thanks to its optimum shaping. It is screwed directly onto the structure extrusions. Centering pins align the rail parallel with the extrusion.

Combined with the suitable slides, it is possible to produce accurate and inexpensive linear guides. Three sizes are available.



Specification

Stainless steel

Order data

Size 20

Standard length 4000 mm L20-01-00/4000
Cut to length L20-01-02-02/...

Size 30

Standard length 4000 mm L30-01-00/4000
Cut to length L30-01-02-02/...

Size 45

Standard length 6080 mm L45-01-00/6080
Cut to length L45-01-02-02/...

